

POLYCRYSTALLINE SILICON | PHOTOVOLTAIC MODULES  
100 W | 120 W | 150 W



About APS:

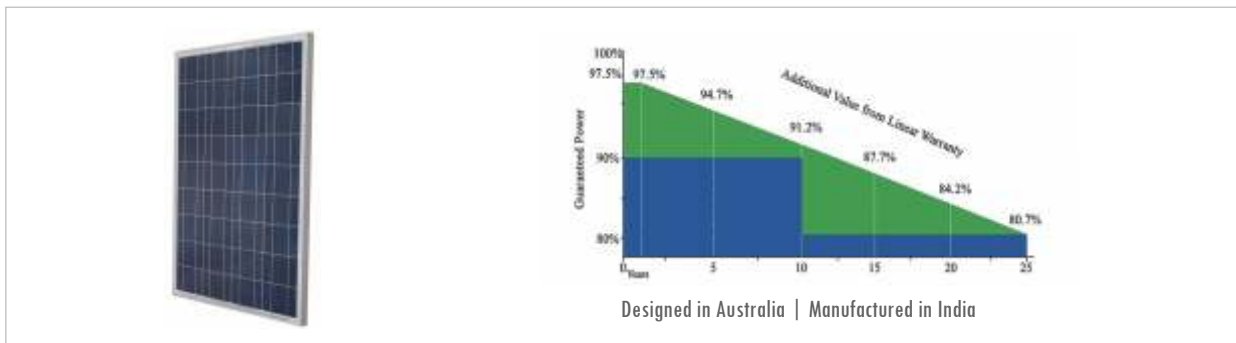
Australian Premium Solar (APS) is 100% Australian Owned managed and operated. APS supplies imported high quality renewable energy products Our solar panels are manufactured in accordance with APS's high standards of design and Quality Control Which ensure higher PV energy yields.

APS opened an advanced facility in Queensland, Australia for research and development and local testing of solar panels. The 2000 sq. mtr. facility is staffed by qualified engineers, who are dedicated to exploring ways to achieve the continuous improvement of our solar cells and solar modules.

12 Years Product Warranty | 30 Years Performance Warranty

91.2% Power Output Up To 12 Years | 80.6% Power Output Up To 30 Years

ISO 9001 : Quality Management System | CHUBB Insurance | PID Free



Australian Brand Manufactured in accordance with APS's high standards of design and Quality Control



Excellent module efficiency Solar cell efficiency up to 18.3%  
Module efficiency up to 15.4%



Positive tolerance Positive tolerance of up to 3% delivers higher output reliability for our all modules.



High performance Higher PV Energy yields even under low light and cloudy conditions



High Model Output Highest conversion efficiency



Reliability Premium quality raw material and advanced manufacturing processes guarantees the reliability of our modules



EL Tested (ELECTRO LUMINESCENCE) Fully confirms to certification and regulatory standards

Web: [www.australianpremiumsolar.co.in](http://www.australianpremiumsolar.co.in) | Email: [info@australianpremiumsolar.co.in](mailto:info@australianpremiumsolar.co.in)

## ELECTRICAL TYPICAL VALUES

Model	APSP6-100/36	APSP6-120/36	APSP6-150/36
Maximum Power (Pmax)	100 W	120 W	150 W
Voltage at max. power (Vmp)	18.2 V	18.22 V	18.27 V
Current at max. power (Imp)	5.6 A	6.60 A	8.22 A
Open Circuit Voltage (Voc)	22.2 V	22.2 V	22.3 V
Short Circuit Current (Isc)	6.20 A	7.16 A	8.77 A
Tolerance	+/-3%	+/-3%	+/-3%
Module Efficiency	14.02%	14.86%	14.95%

## MECHANICAL CHARACTERISTICS

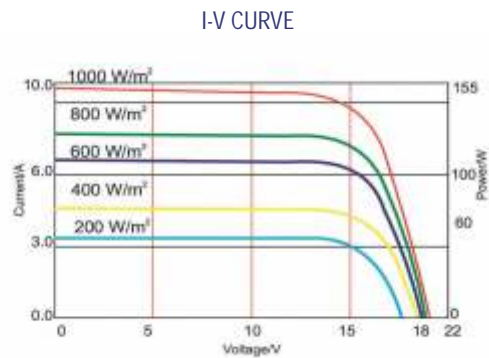
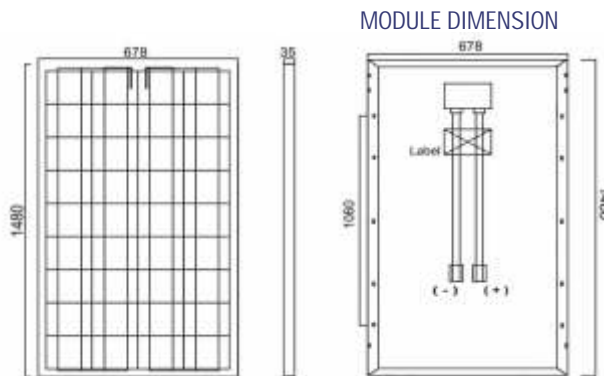
External Dimensions	1060 x 673 x 35 mm	1200 x 673 x 35 mm	1480 x 678 x 35 mm
Weight	10kg	11kg	13kg

NOTE : STC: Irradiance 1000W/m<sup>2</sup> Module Temperature 25°C AM =1.5

TEMPERATURE CHARACTERISTICS	
NOCT (Nominal Operation Temperature)	: 45 ± 2°C
Temperature Coefficient of Voc (β)	: 0.35%/°C
Temperature Coefficient of Isc (α)	: +0.05%/°C
Temperature Coefficient of Pmax (γ)	: -0.45%/°C

ABSOLUTE MAXIMUM RATING	
Parameter	Values
Operating Temperature	From -40° to 85°
Maximum Series Fuse Rating	15 A
IEC Application Class	IEC 61215, IEC 61730
Maximum System Voltage	1000v DC (IEC 61215) 600v (UL 1703)

MODULE CHARACTERISTICS	
Solar Cells	Polycrystalline solar cell
No. of Cells	36 Cells(4*9)
Glass	Low iron, tempered glass, 3.2mm
Frame	Anodized aluminum alloy
Junction Box	IP65/67 rated
Cable & Plug Connectors	1 x 4.0mm <sup>2</sup> Mc4 compatible / IP 67
Maximum Snow Load	2400 Pascal
Maximum Wind Load	5400 Pascal
Hailstone Impact Test	80 km/h for 25mm ice ball



Australia Unit :  
 Australian Premium Solar Pvt. Ltd.,  
 Unit 4/29, Bellrick Street, Acacia Ridge,  
 Queensland-4110. Australia.  
 Ph.: +61-7-3162 0075, Fax.: +61-7-3162 0075  
 Email: info@australianpremiumsolar.com.au  
 Web: www.australianpremiumsolar.com.au

Corporate Office :  
 Australian Premium Solar (India) Pvt. Ltd.,  
 B-802, 8th Floor, Shapath Hexa, Nr. Sola Bridge,  
 Opp. Gujarat High Court, S. G. Highway,  
 Ahmedabad-380061. Gujarat (India).  
 M. : +91 76220 23255 / 58 / 59

India Unit :  
 Australian Premium Solar (India) Pvt. Ltd.,  
 Plot No.: 143, Road No. 4A, GIDC-Kathwada  
 Ahmedabad-382430. Gujarat (India).  
 M.: +91 76220 23245, +91 76220 23249