



## About APS:

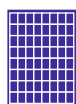
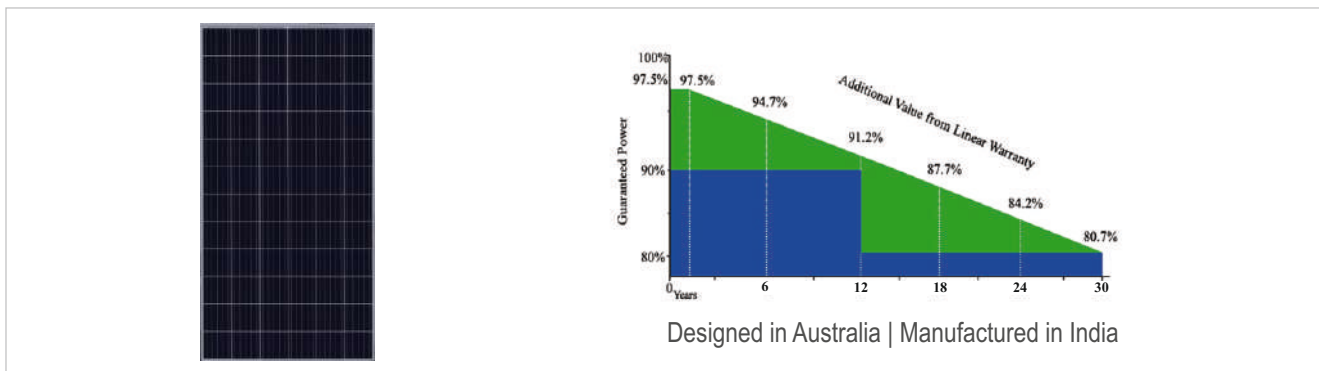
Australian Premium Solar (APS) is 100% Australian Owned managed and operated. APS supplies imported high quality renewable energy products Our solar panels are manufactured in accordance with APS's high standards of design and Quality Control Which ensure higher PV energy yields.

APS opened an advanced facility in Queensland, Australia for research and development and local testing of solar panels. The 2000 sq. mtr. facility is staffed by qualified engineers, who are dedicated to exploring ways to achieve the continuous improvement of our solar cells and solar modules.

# 12 Years Product Warranty\* | 30 Years Performance Warranty\*

91.2% Power Output Up To 12 Years | 80.7% Power Output Up To 30 Years

ISO 9001 : Quality Management System | CHUBB Insurance | PID Free



Australian Brand Manufactured in accordance with APS's high standards of design and Quality Control



Excellent module efficiency Solar cell efficiency up to 21.2%  
Module efficiency up to 18%



Positive tolerance Positive tolerance of up to 4% delivers higher output reliability for our all modules.



High performance Higher PV Energy yields even under low light and cloudy conditions



High Model Output Highest conversion efficiency



Reliability Premium quality raw material and advanced manufacturing processes guarantees the reliability of our modules



EL Tested (ELECTRO LUMINESCENCE) 100% EL double inspection



PID resistant and free of snail trails  
Increased module robustness to minimize micro-cracks



## ELECTRICAL TYPICAL VALUES

Model	APSAP6-350/72
Maximum Power (Pmax)	350 W
Maximum Power Voltage (Vmp)	38.1 V
Maximum Power Current (Imp)	9.21 A
Open Circuit Voltage (Voc)	46.39 V
Short Circuit Current (Isc)	9.79 A
Tolerance	Upto +3%
Module Efficiency	18.0%

## MECHANICAL CHARACTERISTICS

Dimensions	1985 x 1000 x 35 mm
Weight	22.2 kg

**NOTE : STC: Irradiance 1000W/m<sup>2</sup> Module Temperature 25°C AM =1.5**

### TEMPERATURE CHARACTERISTICS

NOCT (Nominal Operation Temperature)	: 47 ± 2°C
Temperature Coefficient of Voc (β)	: -0.35%/°C
Temperature Coefficient of Isc (α)	: +0.05%/°C
Temperature Coefficient of Pmax (γ)	: -0.45%/°C

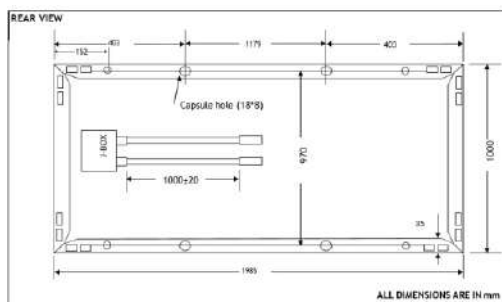
### ABSOLUTE MAXIMUM RATING

Parameter	Values
Operating Temperature	From -40° to 85°
Maximum Series Fuse Rating	15 A
Application Class	BIS, IEC, ISO
Maximum System Voltage	1000v DC (IEC 61215) 600v (UL 1703)

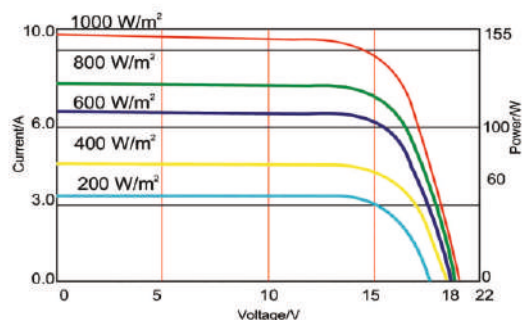
### MODULE CHARACTERISTICS

Solar Cells	Poly
No. of Cells	72 Cells(12*6)
Glass	Low iron, tempered glass, 3.2mm
Frame	Anodized aluminum alloy
Junction Box	IP65/67 rated
Cable & Plug Connectors	1.1 x 4.0mm <sup>2</sup> Mc4 compatible / IP 67
Maximum Snow Load	2400 Pascal
Maximum Wind Load	5400 Pascal
Hailstone Impact Test	80 km/h for 25mm ice ball

### MODULE DIMENSION



### I-V CURVE



#### Note:

- The specifications in this datasheet are subject to change without any notice.
- The electrical data given here is for reference purpose only.
- Please contact our sales team for any customized solutions.
- Please read safety and installation instructions before using the product.
- Subject to Ahmedabad Jurisdiction.

#### \*Warranty:

Please read APS India warranty documents thoroughly on <http://australianpremiumsolar.co.in/warranty/>

**APS**  
AUSTRALIAN PREMIUM SOLAR  
*A Bright Alternative*

**Toll Free:**  
**1800-313-5052**

#### Corporate Office :

**Australian Premium Solar (India) Pvt. Ltd.,**  
4th Floor, 14 Magnet Corporate Park,  
B/h. Intas Corporate House, S.G highway,  
Thaltej, Ahmedabad - Gujarat - 380054.

**M.:** +91-76220-23258

**Email:** sales@australianpremiumsolar.co.in

**Web:** www.australianpremiumsolar.co.in

#### Factory :

**Australian Premium Solar (India) Pvt. Ltd.,**  
At & Post - Tajpur, N.H.-08, Ta - Prantij,  
Dist - Sabarkantha, Gujarat-383205 (India)